



AL-BARAKAH

2025

COMPANY
PROFILE





About us :

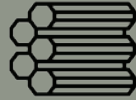
Al-Barakah is a premier service provider specializing in the installation of high-quality glass and stainless steel products. With a commitment to excellence and customer satisfaction, Al-Barakah has established itself as a trusted partner for residential and commercial projects alike, ensuring that clients receive superior craftsmanship and innovative solutions tailored to their specific needs.





Glass Installation

- **Clear Glass:** Commonly used for windows, doors, and partitions in both residential and commercial buildings. Clear glass allows natural light to enter, enhancing the aesthetics of spaces.
- **Tempered Glass:** Stronger and more heat-resistant than standard glass, tempered glass is used in applications such as shower doors, glass railings, and safety windows. It is designed to break into small, safe pieces when shattered.



Stainless Steel

- **Custom Design & Fabrication:** Stainless steel items are custom-designed to meet the specific needs of the project. This could include items such as countertops, sinks, handrails, railings, structural supports, panels, and custom machinery parts. Advanced techniques such as CNC cutting, welding, bending, and laser cutting are employed to shape and form stainless steel to precise specifications.



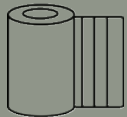
Oven Covers

- **Material Selection:** Custom oven covers are designed using materials like stainless steel, aluminum, or other heat-resistant materials that can withstand high temperatures and provide protection from dirt, grease, or heat exposure. The material chosen depends on the environment (e.g., residential kitchens, commercial kitchens, or industrial settings).



Gypsum

- **Gypsum Board:** Used for walls and ceilings, available in various types such as fire-resistant, moisture-resistant, and soundproof boards. These are most commonly used in residential, commercial, and industrial buildings.
- **Decorative Gypsum:** Includes moldings, cornices, and other architectural elements for aesthetic finishes, often used in interior designs to enhance ceilings and walls.



Aluminium

- **Aluminum Doors & Windows:** Used for residential, commercial, and industrial buildings. Aluminum frames are lightweight, durable, and offer better insulation when combined with thermal breaks or double glazing.
- **Aluminum Cladding & Facades:** Aluminum panels are often used for building facades, providing modern, sleek finishes and added protection against the elements. Cladding can be used for both aesthetic purposes and functional benefits, such as weatherproofing.

Quality Assurance: We prioritize high-quality materials and skilled craftsmanship in every project, ensuring durability and aesthetic appeal.

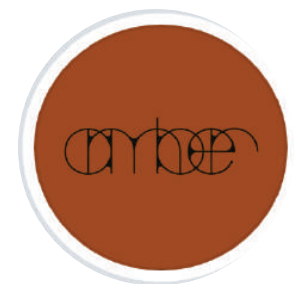
Customer-Centric Approach: Our team is dedicated to understanding and fulfilling the unique needs of each client, providing personalized service throughout the project lifecycle.

Experienced Team: With years of experience in the industry, our skilled professionals bring a wealth of knowledge and expertise to every installation.

Timely Delivery : We understand the importance of deadlines and strive to complete all projects on time without compromising quality.



Amber Cafe





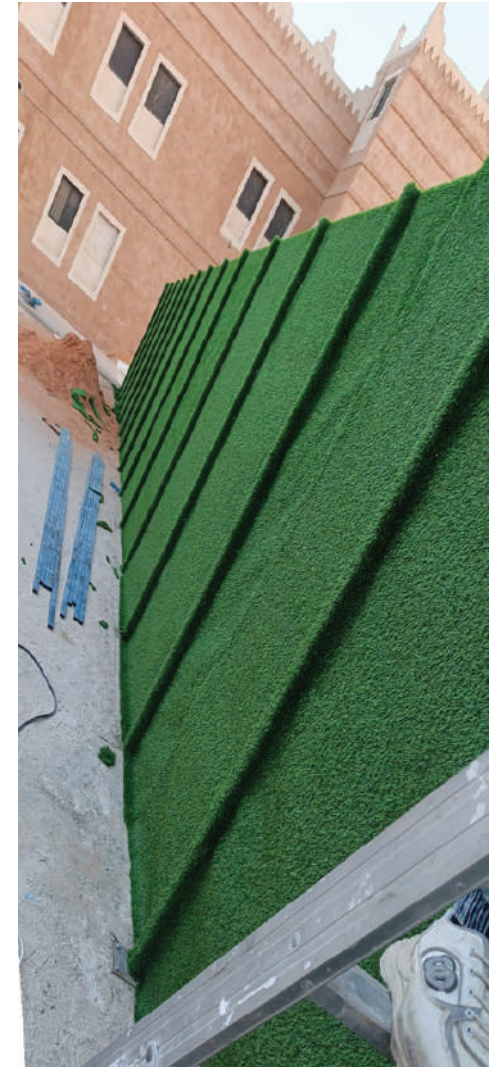
Alkhiyoll Althalathah Security and Safety





RUWA HEAD OFFICE





Estaraha Al Bakar



Our Clients

H & K GROUP
FURNITURE & FITOUT

obika

الحمراني
ALHAMRANI 
PEOPLE . INNOVATION . GROWTH



الشركة النظامية للأعمار والتجارة
Trading Development Partnership



Our Clients

بنك أبوظبي الأول
FAB
First Abu Dhabi Bank



شاورمر
shawarmer[®]

HALA
PAYMENTS

محمصة
الرياض
ARRIYADH ROASTER



الخيول الثلاثة
Alkhiyoll Althalathah
Security and Safety

الإمار **alamar** | 



Ruwa Construction & Development Co رؤى للإنشاء والتعمير

Client engagements listed below were delivered as a subcontractor to RUWA



ABAL



بنك الجزيرة

بنك الجزيرة
aljazira bank

العربية
al arabia

بنك البلاد
Bank Albilad





AL-BARAKAH

Contact Us
+966531944558

Address
Al Madina road, exit 17
Riyadh KSA.